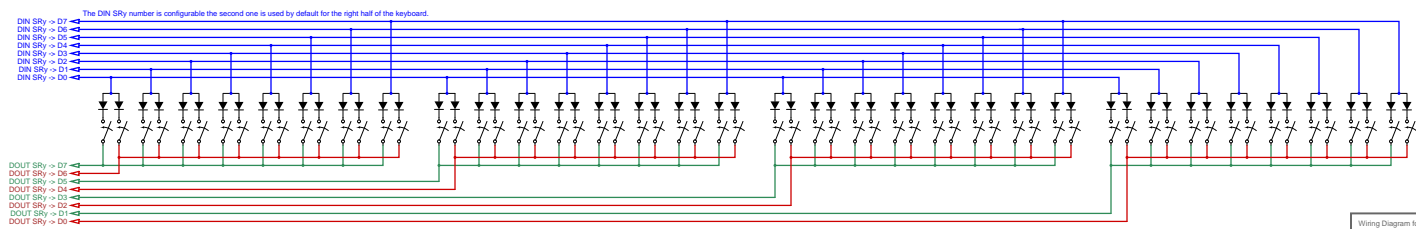


DOUT Pins select the row
The DOUT SRx number is configurable, the first one is used by default for the left half of the keyboard
"Final" and "Early" contact are alternating!

Brown: "Early Contact" (Break)
Green: "Final Contact" (Make)



The DOUT SRy number is configurable, the second one is used by default for the right half of the keyboard

Wiring Diagram for
MIDIbox KB: up to 64 keys with velocity
Type #1
(C) T. Klopp 2012-04-05